



FIBER OPTIC
MICRODUCT SYSTEM

Metro- -Jet

Products presentation

General information

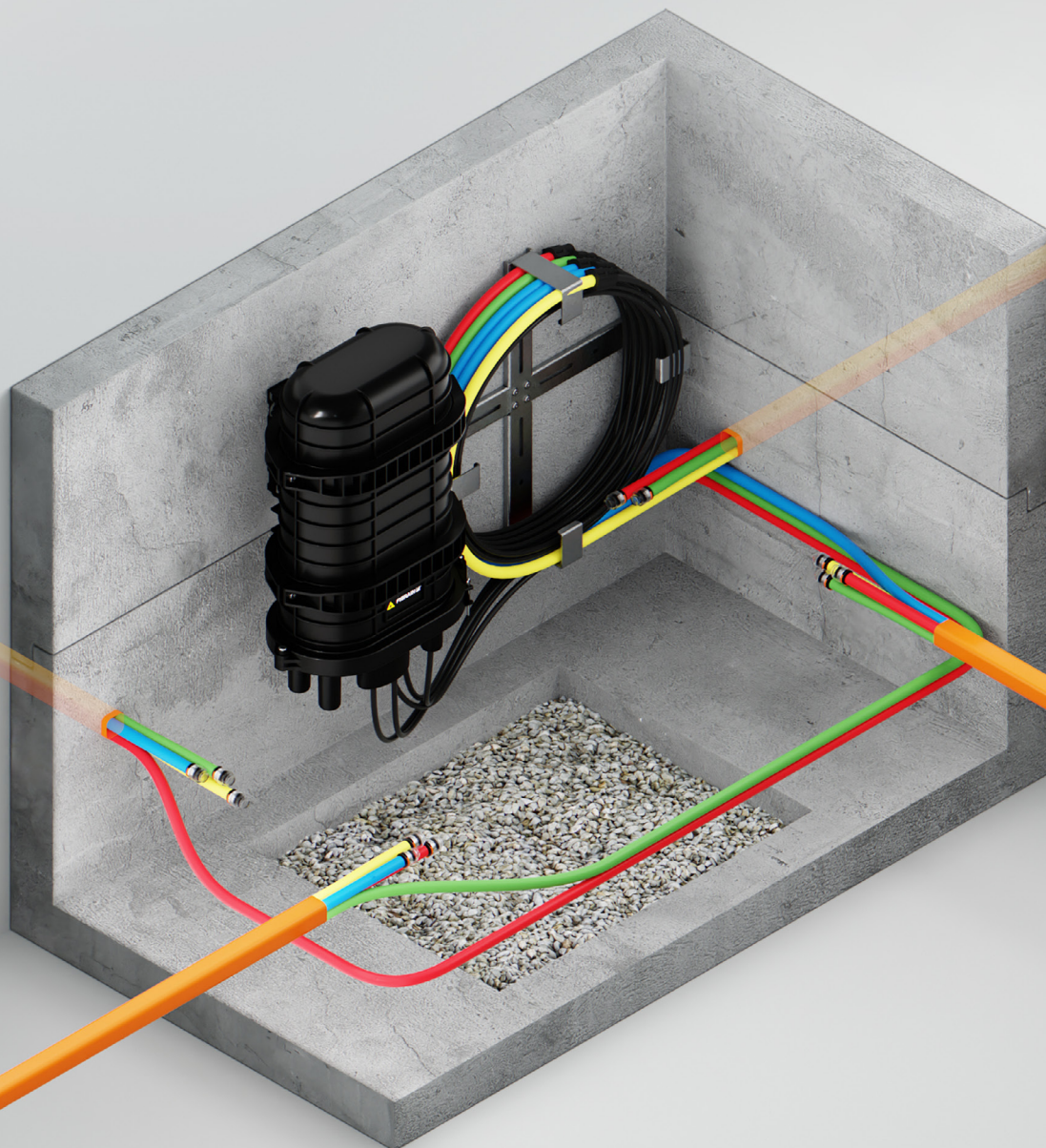
MetroJet microduct system is a multiway ground teletechnical structure.

Due to its design, it provides the installation of many fiber optic microcables into one bundle of single microducts with diameters in the range from 5 to 16 mm. The main advantage of installing foiled bundles is a one-time application of all

MetroJet system offers a wide range of products for the construction of new ground fiber optic networks, as well as the modernization of existing ones. All elements of the system, starting from microducts, connectors as well as microcables, fiber optic closures, cable blowing machines and accessories, provide the possibility of creating even the most complex structures, while maintaining simplicity of installation.

microducts at the same time, which dramatically speeds up the implementation of projects and creates a coherent and orderly network infrastructure.

At the stage of designing and installing cables in a microduct, the appropriate ratio of microcable filling in the space inside the microduct should be maintained. This is important to achieve the best performance when installing microcables using the pneumatic method (blowing microcables). To facilitate this process, a MetroJet compatibility table has been developed (next page).



Compatibility table MetroJet

CABLE TYPE	CABLE DIAMETER	
MICRODUCT (OD/ID) 7 / 3,5		
	MK-DX 2-4F	1,8 mm
MICRODUCT (OD/ID) 7 / 4		
	MK-DX 2-24F	2,6 mm
MICRODUCT (OD/ID) 10 / 6		
	MK-LX4 4-24F	4,2 mm
	MK-LX45 LSOH 24F	4,5 mm
MICRODUCT (OD/ID) 12 / 8		
	MK-UX5 12-144F	4,4-5,9 mm
	MK-LX5 4-60F	5,2 mm
	MK-LXS6 2-72F	5,3 mm
	MK-LX6 4-72F	5,6 mm
	MK-FM6 12-72F	6,0 mm
	MK-LXS7 32-96F	6,2 mm
	MK-FM7 96F	6,3 mm

CABLE TYPE	CABLE DIAMETER	
MICRODUCT (OD/ID) 14 / 10		
	MK-UX6 12-192F	5,2-6,6 mm
	MK-LX7 32-96F	6,7 mm
	MK-UX8 12-288F	6,8 -7,9 mm
	MK-LXS8 48-144F	7,8 mm
	MK-FM8 144F	7,9 mm
MICRODUCT (OD/ID) 16 / 12		
	MK-LX8 12-144F	8,6 mm
	MK-LXS9 168-216F	8,7 mm
	MK-LX9 168-216F	8,9 mm
	MK-LXS10 288F	9,3 mm
	MK-LXS11 288F	9,4 mm
MICRODUCT (OD/ID) 18 / 14		
	MK-LX11 240-288F	10,5 mm

MetroJet system components



1

Microcables



2

Microducts



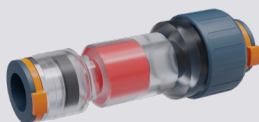
3

Foiled bundles



4

HDPE opto pipes



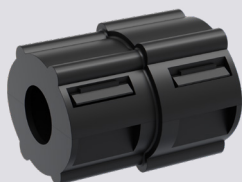
5

Microduct connectors



6

Microduct end caps



7

Microduct sealings



8

**Divisible duct joint
and branch closures**



9

Telecommunication manhole chambers



10

Fiber optic closures



11

Outdoor fiber optic cabinets



12

Blowing machines



13

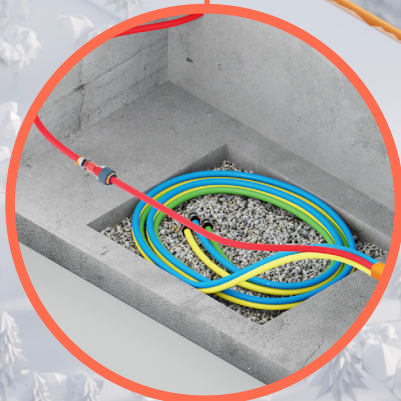
Accessories



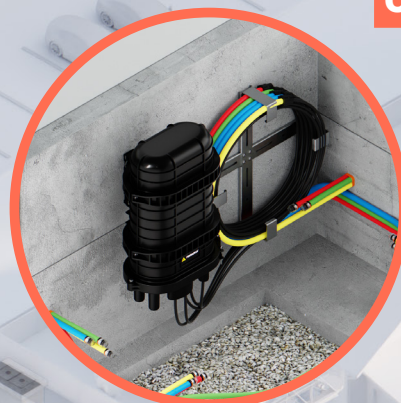
Microcable



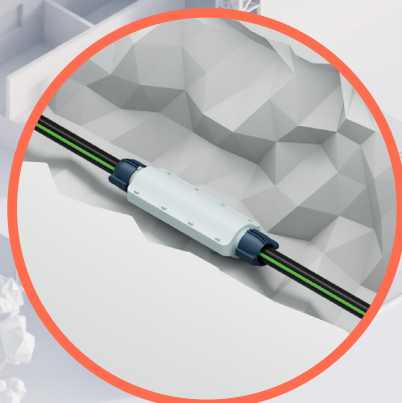
Outdoor fiber optic cabinet



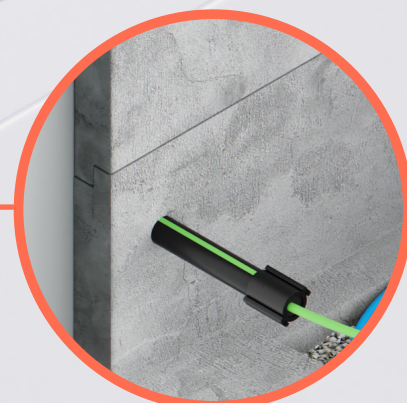
Microducts



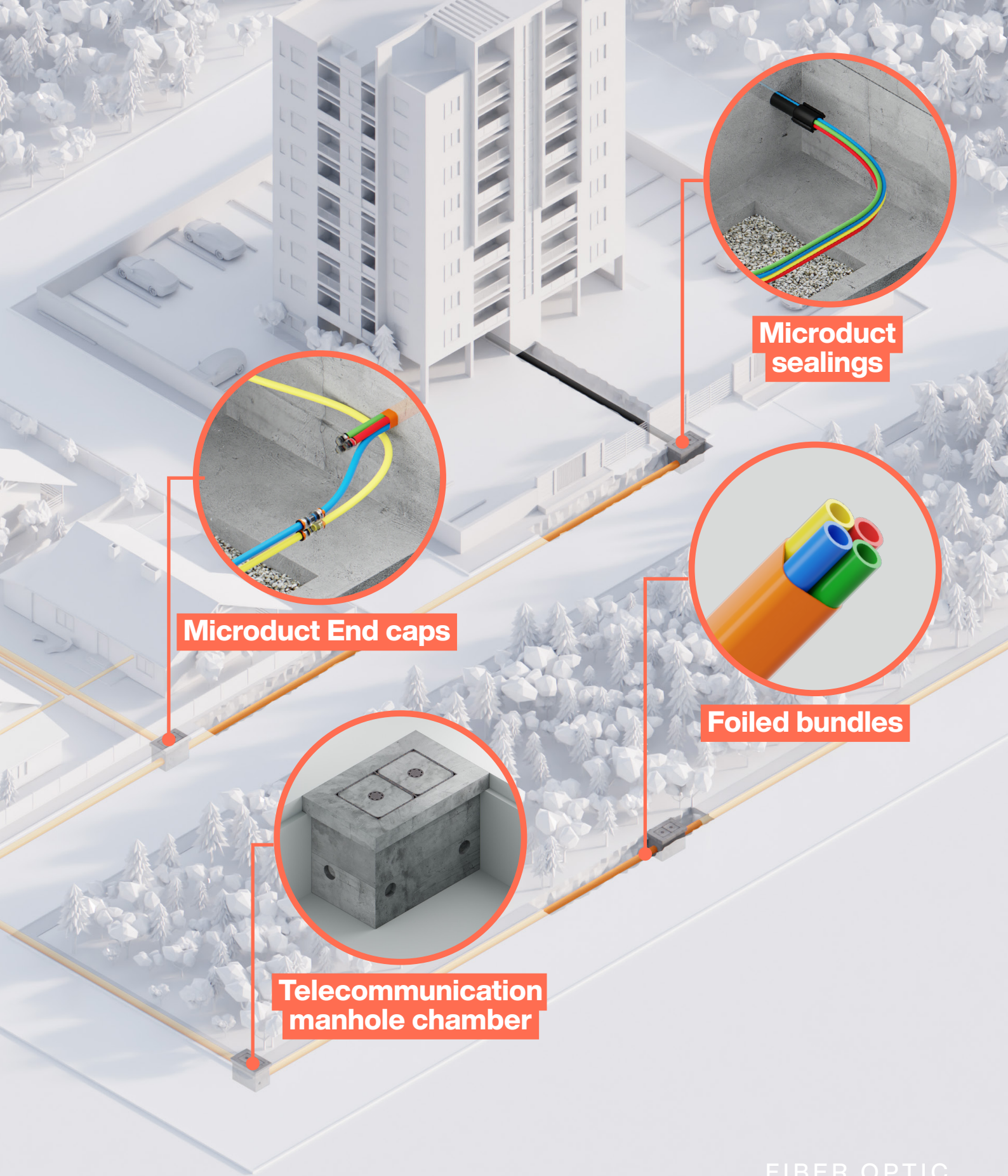
Fiber optic closure



Divisible duct joint and branch closure



HDPE opto pipes



**Microduct
sealings**

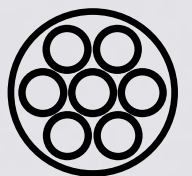
Microduct End caps

Foiled bundles

**Telecommunication
manhole chamber**

FIBER OPTIC
MICRODUCT SYSTEM

MetroJet



Microcables

MetroJet microcables are specifically adapted to installation inside the teletechnical microduct system. They are characterized by a reduced diameter and load-bearing coating which allow them to be blown over considerable distances by pneumatic method.



High fiber density



Long-range blowing performance



Reduced diameter



Low coefficient of friction

Drop microcables



MK-DX
1,8 mm 2-4F



MK-DX
2,6 mm 2-24F

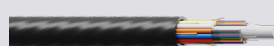
Microcables MK-LX



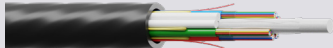
MK-LX4
4,2 mm 4-24F
tube 1,0 mm



MK-LX5
5,2 mm 4-60F
tube 1,6 mm



MK-LX6
5,6 mm 4-72F
tube 1,6 mm



MK-LX7
6,7 mm 32-96F
tube 1,6 mm



MK-LX8
8,6 mm 12-144F
tube 1,6 mm



MK-LX9
8,9 mm 168-216F
tube 1,6 mm



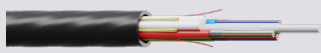
MK-LX11
10,5 mm 240-288F
tube 1,6 mm

Microcables

Microcables MK-LXS



MK-LXS6
5,3 mm 2-72F
tube 1,4 mm



MK-LXS7
6,2 mm 32-96F
tube 1,4 mm



MK-LXS8
7,8 mm 48-144F
tube 1,4 mm



MK-LXS9
8,7 mm 166-216F
tube 1,4 mm



MK-LXS10
9,3 mm 288F
tube 1,4 mm

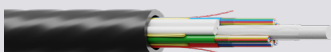


MK-LXS11
9,4 mm 288F
tube 1,4 mm

Microcables MK-UX



MK-UX5
4,4-5,9 mm 12-144F
fiber 200 μ m
tube 1,2-1,6 mm

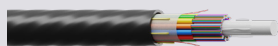


MK-UX6
6,8-7,9 mm 12-288F
fiber 200 μ m
tube 1,2-1,6 mm

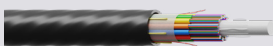


MK-UX8
6,8-7,9 mm 12-288F
fiber 200 μ m
tube 1,2 mm

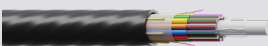
Microcables with ESM micromodules



MK-FM6
6,0 mm 12-72F
micromodule 1,3 mm



MK-FM7
6,3 mm 96F
micromodule 1,3 mm



MK-FM8
7,9 mm 144F
micromodule 1,3 mm

Indoor Microcables



MK-LX45 LSOH
4,5 mm 24F
tube 1,0 mm

Microducts

Microducts are main elements of MetroJet microduct system. They are designed for mechanical and environmental protection of installed microcables. They are also used to multiply already existing secondary pipes of microduct systems.



Compressive strength



Pneumatic resistance



Low coefficient of friction



Microcables damage protection

Direct-buried microducts



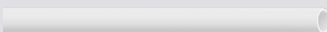
MT-MDB
Direct-buried microducts
5-16 mm

Standard microducts



MT-MDI
Standard microducts
5-16 mm

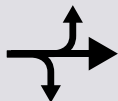
Non-flammable microducts



MT-MLH
Non-flammable microducts
5-14 mm

Foiled microduct bundles

Foiled bundles of the MetroJet system are microducts covered in polyethylene foil. They give the possibility of placing from a few to several tracks with different configurations of microducts at the same time at one installation cost.



**Easy
branching**



**Direct-buried
applications**



**Various
microduct filling
configurations**



**Time saving
during installation**

Direct-buried foiled bundles of microducts



**MT-WDB Foiled bundles
2x5-18 mm**



**MT-WDB Foiled bundles
3x5-18 mm**



**MT-WDB Foiled bundles
4x5-18 mm**



**MT-WDB Foiled bundles
4x5-18 mm**



**MT-WDB Foiled bundles
4x5-18 mm**



**MT-WDB Foiled bundles
7x5-18 mm**

Flat foiled bundles of microduct



**MT-WDBF Flat foiled bundles
4x5-18 mm**

Customized options of foiled bundles available
after contact with the Sales Department.

Opto pipes

OPTO pipes of the MetroJet system are protective pipes used for the construction of secondary sewage system for cable pipelines. They protect fiber optic cables and give the opportunity to multiply them with microducts in case of expansion.



Various pipe diameters

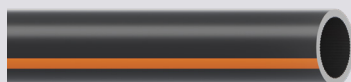


Sliding ribs



Cables/ microduct damage protection

Opto pipes



**OPTO 20-50 mm pipe
orange strip**



**OPTO 20-50 mm pipe
blue strip**



**OPTO 20-50 mm pipe
green strip**



**OPTO 20-50 mm pipe
red strip**

Connectors

MetroJet connectors are elements that guarantee the tightness of connected microducts. They ensure water resistance and create a well fitted connection which facilitates blowing microcables without having to interrupt the process.



Pneumatic resistance



Push-in tool-free installation



Various diameter of microducts



Microduct protection against water, or dust penetration

Straight connectors



MT-ZDI
Standard straight connector
5-20 mm



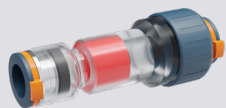
MT-ZDB
Direct-buried straight connector
7-20 mm

Reduction connector



MT-ZR
Direct-buried reduction connector
5-16 mm

Adjustable water-gas connectors



MT-ZG
Water-gas proof connector
5-16 mm

Valve connector



MT-VLE
Connector with pressure valve
10-12 mm

End caps and sealings

MetroJet end caps and sealings are used to protect the ends of microducts of various sizes against the penetration of water, gases and contaminants from the outside. The patency and cleanliness of the track is extremely important when installing microcables.



Pneumatic resistance



Push-in tool-free installation



Various diameter of microducts



Microcut protection against water or dust penetration

Standard end caps

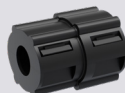


MT-ZTDI
Microduct end cap 5-20 mm

Divisible sealing end caps



MT-ZUD
End cap sealing for microducts 5-10 mm

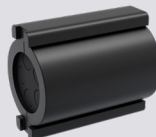


MT-ZUD
End cap sealing for microducts 10-25 mm

Pipe sealings

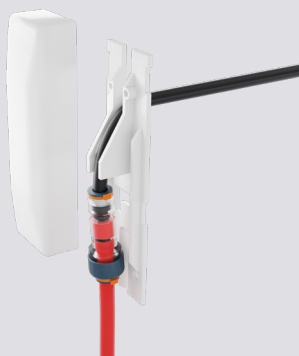


MT-ZTP
PVC end cap 5-16 mm



MT-UWD
Divisible pipe sealings 25-63 mm with microducts

FTTH entry 90°



MT-UPS ftth entry 90°
5-12 mm

Divisible duct joint and branch closures

MetroJet divisible closures are designed to protect connectors and the microducts themselves against mechanical and environmental damage. Additionally, they make it possible to upgrade the existing pipelines by dividing routes in different directions.



**Protection against
mechanical damage**



**Freedom
of installation**

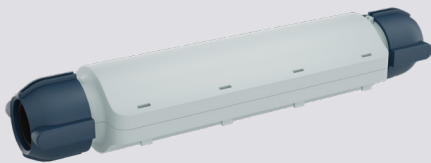


**Pipelines
extension**



**Two-part
construction**

Divisible closures PDC



**MT-OPL
Straight closure
40-40**



**MT-OPL
Y closure 40-40-40**



**MT-OPL
Branching closure
40-40-32**

Telecommunication manhole chambers

Telecommunication manhole chambers of the MetroJet system are designed to facilitate access to cabling at the connection and distribution point in the ground, while protecting the equipment (fiber optic closures, racks and cables) against mechanical damage.



**Easy access
to cabling**



**Damage
protection**

Reinforced concrete manholes

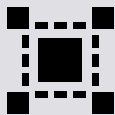


Composte manholes and chambers



Fiber optic closures

Fiber optic closures enable easy entrance of microcables and drop cables with the possibility of pre-connectorization, appropriate organization of tubes, splitters, adapter fields and protection of fibers during future operations.



**Max. 288
splices**



**Cable diameter
from 3 to 20 mm**



**Max. 18 adapter
fields**



**Solid
construction**

Fiber optic closures – mechanically sealed drop ports



FOBP-M1



FOBP-M2

Fiber optic closures – thermally sealed drop ports



FOBP-T1



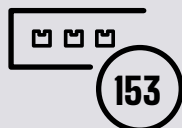
FOBP-T2

Outdoor cabinets

Outdoor fiber optics cabinets are designed to connect fiber optic tracts as well as perform branching and connecting end users (customers).



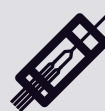
IP54 waterproof protection



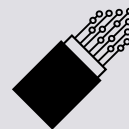
Max. 153 adapters



Lock secure



Possibility of mounting splitters



For main and drop cables

Outdoor cabinets



FDH-D2
96 splices



FDH-E1
13x SC
96 splices



FDH-E2
39x SC
120 splices



FDH-F1
27x SC
48 splices



FDH-F2
45x SC
48 splices



FDH-F3
85x SC
96 splices



FDH-F4
153x SC
144 splices

Cable blowing machines

CBS Products blowing machines are devices aimed at installing a fiber optic microcables/cables over long distances in microducts/HDPE opto pipes via compressed air and drive rollers/belts.



**Long-range
blowing
performance**



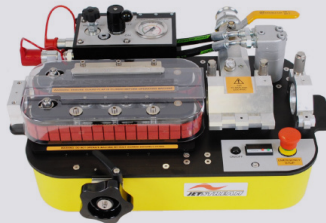
**Various types
of cable blowing
machines**



**Control of
blowing
parameters**



AirStream
Microcables/cables 2,5-11 mm
microducts 5-18 mm



JetStream
Microcables/cables 4-20 mm
microducts/pipes 12-50 mm



Hurricane
Microcables/cables 2,5-16 mm
microducts/pipes 5-25 mm



Tornado
Microcables/cables 6-32 mm
pipes 25-50 mm



AccelAir 2
Microcables/cables 1-3 mm
microducts 3-10 mm



Whisper
Microcables/cables 3-8,5 mm
microducts 4-18 mm



GentL Air
Microcables/cables 1-3 mm
microducts 4-7 mm

